

PROPOSAL OF AI POWERED INTELLIGENCE PROJECT MONITORING DASHBOARD SYSTEM.

1.0 INTRODUCTION

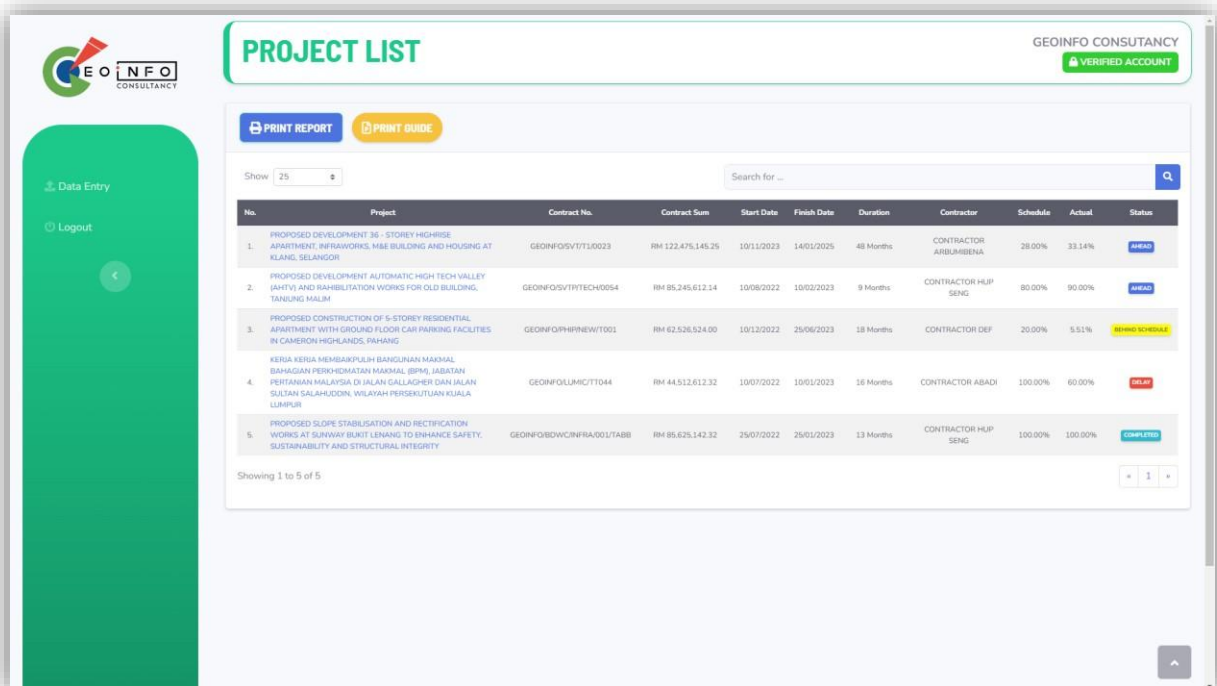
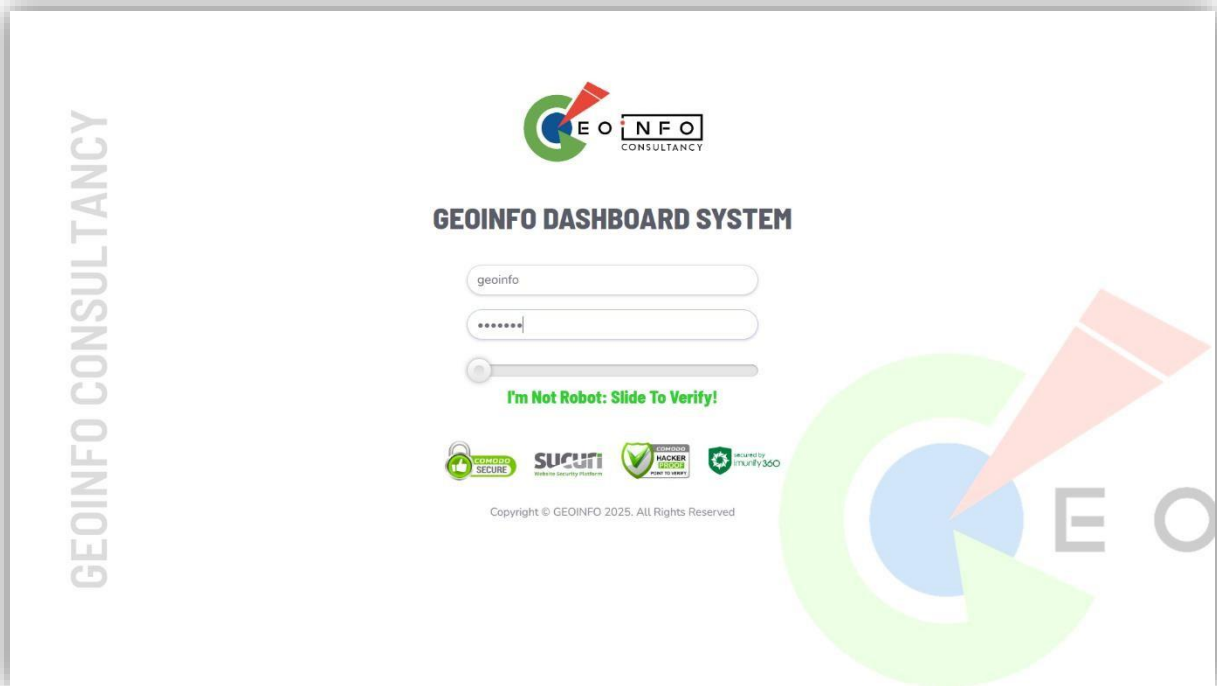
The proposed digital monitoring system, amongst other features, disseminates vital information such as financial status, project health status, progress status, project information, on-site issues, and the Google map location of the projects. Imagine being thousands of kilometres away from a project site and still being able to obtain detailed visibility information on-site. This system makes this possible for stakeholders who need to closely monitor their projects with the latest updated data. This proposed system is the first of its kind to be equipped with the latest Generative AI, which can study and harness your corpus database and provide business intelligence insights on your operations for informed decision-making.


2.0 AI POWERED INTELLIGENCE PROJECT MONITORING DASHBOARD SYSTEM

The AI Powered Intelligence Project Monitoring Dashboard System is the application of digital tools to improve the process of delivering and operating the built environment. This AI Powered Intelligence Project Monitoring Dashboard System would greatly benefit organization in terms of managing, supervising and monitoring the current progress and health status of the on-going projects.

The AI Powered Intelligence Project Monitoring Dashboard System disseminates information such as schedule vs actual progress percentage, numbers of resources on site, schedule performance index, projected completion date, contractor performance speed, project financial status, project variance and many others vital information for progress reporting and project health status, all within the reach of fingertips.

The AI Powered Intelligence Project Monitoring Dashboard System will enable the Management and Supervision Team to track & monitor the latest progress status of its project on site instantly, without physically being present on site all within the fingertips through your mobile devices.





PROJECT INFORMATION

GEOINFO CONSULTANCY
VERIFIED ACCOUNT

PROPOSED DEVELOPMENT 36 - STOREY HIGHRISE APARTMENT, INFRAWORKS, M&E BUILDING AND HOUS...

Contract No.	: GEOINFO/SVT/TT/0023
Contract Sum	: RM 122,475,145.25
Contractor	: CONTRACTOR ARBUMBENA
Commencement Date	: 10/11/2023
Completion Date	: 12/12/2024
Sectional Completion Date	: 21/06/2024
Project Duration	: 48 Months
Revised Completion Date	: 14/01/2025
Revised Sectional Completion Date	: 24/06/2024
LAD Rate Per Day	: i) Main Contract: RM 5,800.00/per Day ii) Sectional: RM 1,500.00/per Day
General Scope of Works	: 1. Site Clearing 2. Earthwork (Embankment Filling) 3. Tower Construction 4. Infra Works 5. Landscape

[BACK TO PROJECT LIST](#)

- Project Info
- Physical Progress
- Financial Progress
- Progress Photo
- Project Issues
- Drawings
- Map Location
- ASK XENTINEL AI
- Data Entry
- Logout

Copyright © GEOINFO 2025. All Rights Reserved



PHYSICAL PROGRESS

25 Jan 2023


PROPOSED DEVELOPMENT 36 - STOREY HIGHRISE APARTMENT, INFRAWORKS, M&E BUILDING AND HOUSING AT KLANG, SELANGOR (CONTRACT NO: GEOINFO/SVT/TT/0023)


Generate Report

PROGRESS REPORT NO.5

Time-Lapsed As At: 25 January 2023

PROJECT STATUS AHEAD	SCHEDULE 28.00% <small>MONTHLY TARGET</small>	ACTUAL 33.14% <small>MONTHLY ACHIEVEMENT</small>	VARIANCE 5.14%
---	---	--	---------------------------------------

PHYSICAL S-CURVE


MANPOWER RESOURCES
VIEW MACHINERY


EOT APPROVED
10 Days

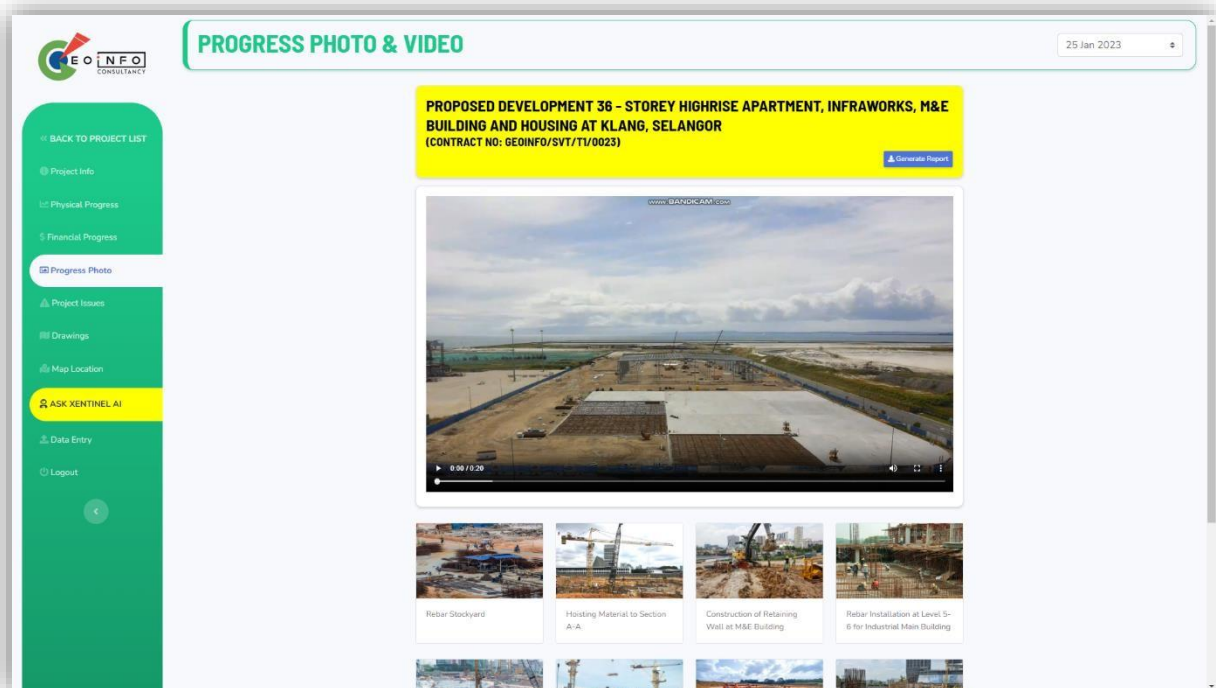
REVISED COMPLETION DATE
14/01/2025


DURATION TO COMPLETION:
< Less Than 3 Months

DAYS VARIANCE (AHEAD/ DELAY)
+73 DAYS

[BACK TO PROJECT LIST](#)

- Project Info
- Physical Progress
- Financial Progress
- Progress Photo
- Project Issues
- Drawings
- Map Location
- ASK XENTINEL AI
- Data Entry
- Logout





PROJECT ISSUES

GEOINFO CONSULTANCY
VERIFIED ACCOUNT

PROPOSED DEVELOPMENT 36 - STOREY HIGHRISE APARTMENT, INFRAWORKS, M&E BUILDING AND HOUSING AT KLANG, SELANGOR
(CONTRACT NO: GEOINFO/SVT/T1/0023)

Generate Report

CONSTRUCTION DESIGN ISSUES

- Redesign the front Facade due to New Council Requirement OPEN
- Discrepancies on the drawing with the council requirement ISSUES CLOSED

LAND AND CROP COMPENSATION ISSUES

- Land Issues due to toe drain design construct on the boundary ROW ISSUES CLOSED

EXTENSION OF TIME (PENDING)

- Application Extension of Time Exceptionally Inclement Weather (ETW) for Year 2023 OPEN
- Exceptionally Inclement Weather ETW due to heavy rain monsoon ISSUES CLOSED

UTILITIES ISSUES

- Relocation of SEB Transformer at North Section of Construction Area OPEN
- Relocation of SEB Pole affected at front main access ISSUES CLOSED

PROPOSAL TO ISSUE VARIATION ORDER


- Variation Order to the Ceiling height at Level 10 due to Multi Propose Hall OPEN
- Additional Guard house to suit council requirement ISSUES CLOSED

CONTRACTOR ISSUES

- Piling Machine breakdown & sparepart required long time to arrive OPEN
- Lack Manpower for brickworks ISSUES CLOSED
- Lack of Bore Pile Machine due to Shortage of Bore Pile Machine ISSUES CLOSED
- M&E Works insufficient subcon ISSUES CLOSED

OTHER ISSUES

- Issues on the SPA Approval pending due to Incomplete documentation ISSUES CLOSED
- Payment Process takes couple month to process due to Audit purposes ISSUES CLOSED



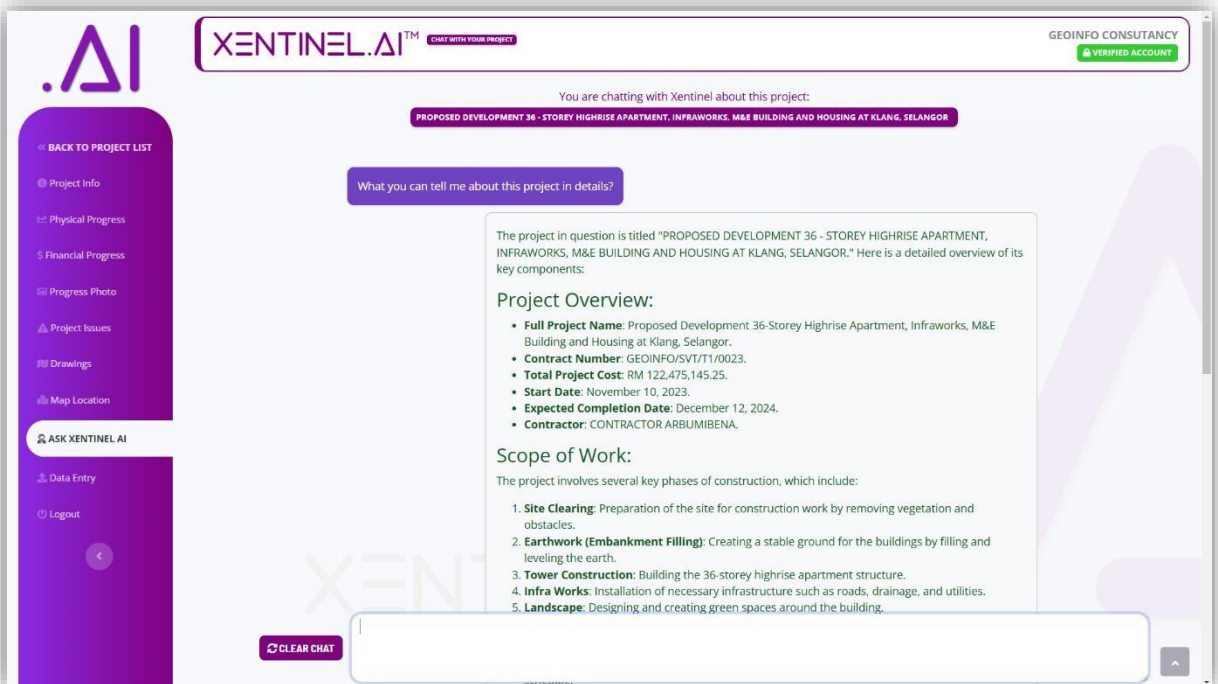
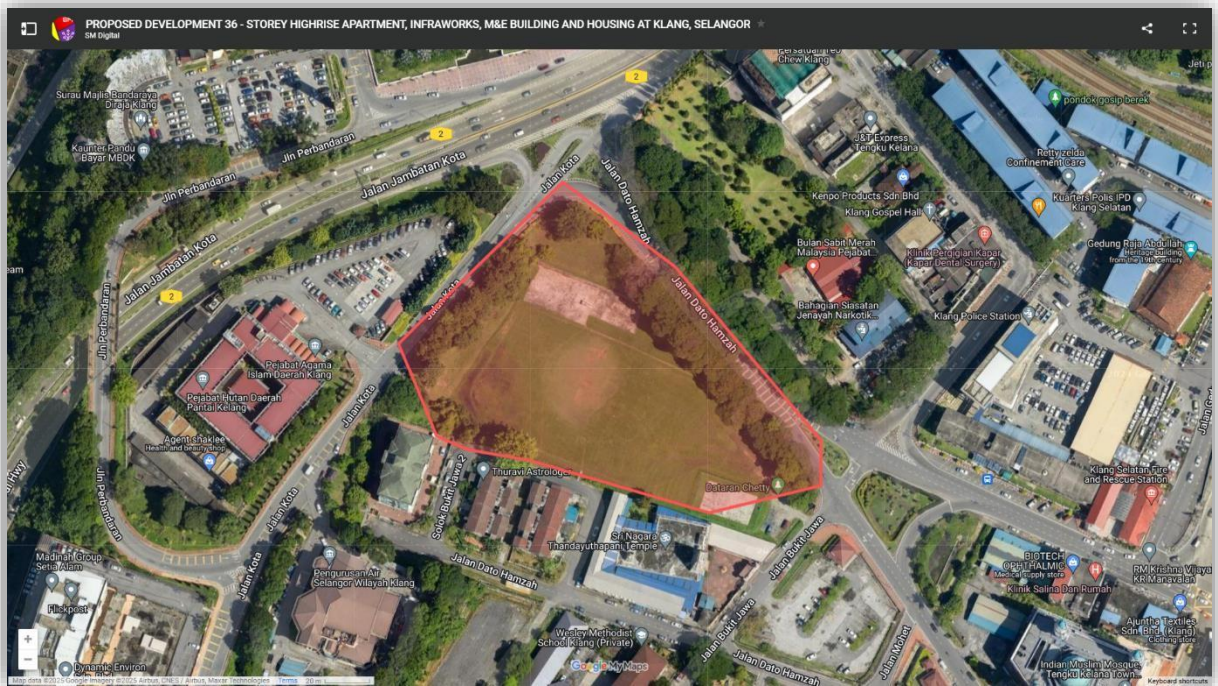
DRAWING REPOSITORY LIST

GEOINFO CONSULTANCY
VERIFIED ACCOUNT

PROPOSED DEVELOPMENT 36 - STOREY HIGHRISE APARTMENT, INFRAWORKS, M&E BUILDING AND HOUSING AT KLANG, SELANGOR

No.	Drawing Title	Issuance Date	Drawing Type
1.	CONSTRUCTION DRAWING	03/02/2023	Construction Drawing
2.	M&E DRAWING (REVISION NO.1)	09/02/2023	Construction Drawing

Copyright © GEOINFO 2025. All Rights Reserved

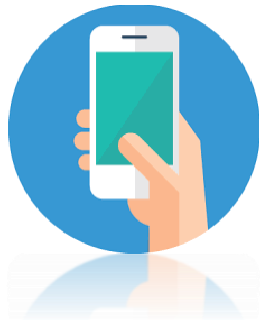


3.0 **BENEFITS OF AI POWERED INTELLIGENCE PROJECT MONITORING DASHBOARD SYSTEM (OPTIONAL)**

This cutting-edge technology revolutionizes the way organization operate by embracing digital technology application on day-to-day operation. The AI Powered Intelligence Project Monitoring Dashboard System provides accuracy, time efficiency, cost effective and convenience at all level. In short, that translate into making the delivery, operation and renewal of built environment safer, more efficient and more collaborative. It ensures the organizations get better outcome at every stage of project lifecycle.

The benefits of the **AI POWERED INTELLIGENCE PROJECT MONITORING DASHBOARD SYSTEM** are as following but not limited to: -

3.1 **INSTANT ACCESS ANYTIME AND ANYWHERE**



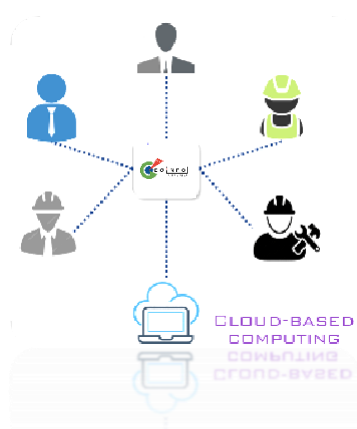
The AI Powered Intelligence Project Monitoring Dashboard System allow users to instantly access to their project site progress information and health status simply by clicking the app on their mobile phone. Users can view current latest update on their project progress anywhere, and anytime all within the reach of the fingertips. It is so convenient!

3.2 CLOUD BASED OPERATING SYSTEM



The AI Powered Intelligence Project Monitoring Dashboard System utilizes modern cloud web-based computing system to preserve data in order to ensure that the data is smoothly transferred, easily retrievable and readily accessible anyway and anytime through mobile devices without having to worry about storage issues or limited accessibility or mobility problems.

3.3 SMART COMMUNICATION



Conventionally, the way the data are being obtained is by passing one information from one party to another party. This mode of communication, however, greatly causes glitches and irregularity to end receivers. Through AI Powered Intelligence Project Monitoring Dashboard System everyone can access the same data information without having to worry about irregularity in the information received by any parties.

3.4 TIME EFFICIENCY



Traditionally, users must travel to great distance to obtain data information on progress at site. This has greatly caused inefficiency in the way the data is transmitted to end receiver especially for sites located a very distance away. Through AI Powered Intelligence Project Monitoring Dashboard System with information readily within fingertips, users can eliminate travel time and use the time saved on travelling to focus more on crucial task at hand.

3.5 COST-EFFECTIVE



The AI Powered Intelligence Project Monitoring Dashboard System enable to user to gain “access” to the site without physically being present there. Thus, with omission of travelling time and cost and efficient management of data transmitted, this can be translated to cost saving in the long runs for the stakeholders by eliminating wastages on unnecessary spending.

3.6 UNLIMITED ACCESS



The AI Powered Intelligence Project Monitoring Dashboard System allows authorized users to gain full and unlimited access to its project information archives. Unlimited number of projects can be registered, stored and accessed by the user. The user also enjoyed the full privileged of unlimited project information data retrievable from the project archives.

3.7 SECURE AND SAFE



The AI Powered Intelligence Project Monitoring Dashboard System utilized Big Data integration approach and all data store at dedicated private storage server encrypted with 5-Tier security layer and come with back up recovery features against any possible online threats so that all project information archives are kept secured at all times. This system is also certified with hacker-proof security marks and equipped with antivirus firewall protection to ensure all data and document are well kept and remain safe and secure all times.

4.0 VIRTUAL CLOUD SERVER INFRASTRUCTURE

The AI POWERED INTELLIGENCE PROJECT MONITORING DASHBOARD SYSTEM operates on a robust Private Dedicated Hypervisor High-Performance Virtual Machine (VM) Cloud Server. It features enterprise-grade self-healing architecture with automatic hypervisor failover, ensuring high availability and dynamic load balancing. The system is designed for seamless resource scalability, allowing organizations to expand effortlessly as needed. With advanced cybersecurity measures, including antivirus protection, server and application firewalls, and system and data backup, it guarantees the highest level of data protection. This infrastructure ensures uninterrupted performance, secure cloud storage, and reliable access to all project data, providing a stable foundation for efficient project monitoring and management.

5.0 FUTURE PROOF

The AI POWERED INTELLIGENCE PROJECT MONITORING DASHBOARD SYSTEM is developed using the latest and modern programming language, making it scalable, flexible, and easily upgradable to meet your changing business needs as required. Rest assured that your investment in the system is future-proof and will continue to benefit your business in the long run.

PREPARED BY:

IZMIR FAHMI BIN MUSTAZA

GEOINFO SERVICES SDN BHD